

Toggle Clamps

Steel / Stainless Steel, Operating Lever Horizontal, with Lock Mechanism, with Vertical Mounting Base, with Extended Clamping Arm

SPECIFICATION

Types

- Type **NL**: Forked clamping arm, with two flanged washers
- Type **NLC**: Forked clamping arm, with two flanged washers and clamping screw GN 708.1 (see page)
- Type **PL**: Solid clamping arm, with clasp for welding
- Type **VL**: Clamping arm extended, with slotted hole and with two flanged washers
- Type **VLC**: Clamping arm extended, with slotted hole, two flanged washers and clamping screw GN 708.1 (see page)

Version in Steel

- Case-hardened steel C10
- Zinc plated, blue passivated
- Bearing pins tempered
- Bearing rivets (for size 355 and up) case-hardened
- All moving parts
- Lubricated with special grease
- Hand grip
- High quality, oil resistant, red plastic
- Clamping screw GN 708.1, type A (see page 1625)

Version in Stainless Steel NI

- Stainless steel AISI 304
- All moving parts
- Lubricated with special grease
- Hand grip
- High quality, oil resistant, red plastic
- Clamping screw GN 708.1, type A (see page)
- Stainless steel, AISI 304
- Rubber tip 85 Shore A

INFORMATION

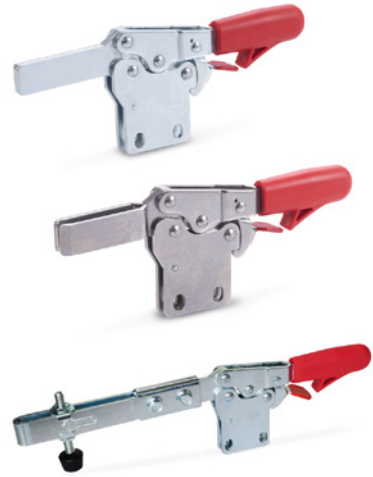
Toggle clamps GN 820.4 have a safety function whereby, during closing, a spring loaded safety hook latch ensures a secure locking connection. It prevents the inadvertent unlocking of the clamp due to vibrations or an accidental attempt of loosening / opening of the clamp. To open and release the clamp, pull up on the finger grip to disengage the safety hook latch mechanism (one hand operation). They work according to the toggle principle: lever and clamping bar move in the opposite direction. They require less space for the clamping action.

Toggle clamps in the U-bar version with two flanged washers (type NL) can accommodate an application specific clamping screw. A clamping screw with neoprene rubber tip is also included for type NLC.

Toggle clamps in the type PL version can either be utilized by welding the clasp which can then accommodate an application specific hold-down fastener component, or by utilizing the bar in conjunction with the GN 809 (see page) holders for clamping screws to hold the work piece in place.

Toggle clamps in the U-bar version with two flanged washers (type VL) can accommodate an application specific clamping screw. A spindle assembly with neoprene rubber tip is also included for type VLC.

- General information for toggle clamps (see page 1560)



ACCESSORY

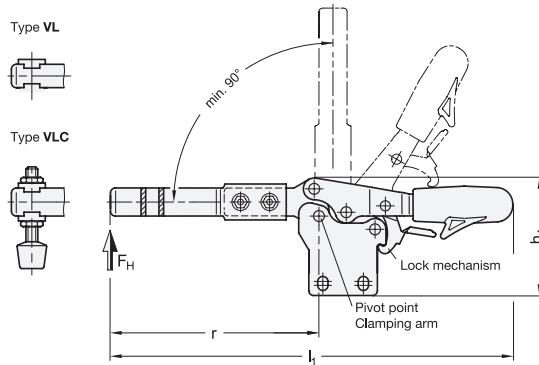
- Spindle assemblies (see page 1623)
- Clamping Screws (see page)
- Holders for Clamping Screws GN 801 (for Type NL and VL) (see page 1629)
- Holders for Clamping Screws GN 809 (for Type PL) (see page 1630)
- Clamping Arm Extenders GN 809.1 (for Type PL) (see page)
- Clamping Arm Extenders GN 801.1 (for Type NL and VL) (see page)
- Clamping Arm Extenders GN 801.2 (for Type NL and VL) (see page)

TECHNICAL INFORMATION

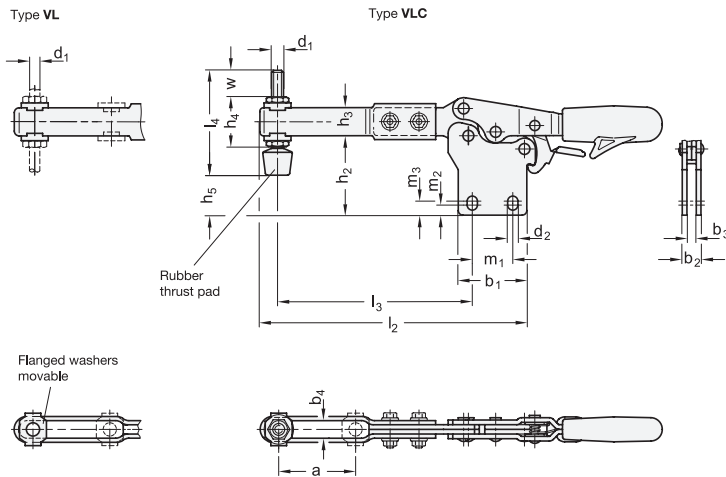
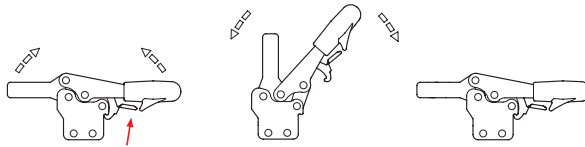
- Stainless Steel Characteristics (see page A26)



Toggle, power and hook clamps 14



Operating principle



GN 820.4-ST

Description	Size	FH in N	a ≈	b1	b2	b3	b4	d1	d2	h1 ≈	h2	h3	h4	h5 max.	l1 ≈	l2 ≈	l3 ≈	l4 max.	m1	m2	m3	r ≈	w	⚖
GN 820.4-130-VL	130	600	67.5	36	10	5	6.3	M 6	5.6	64.5	44	16	25.5	27.5	250	171	133	55	26	5.8	8.8	141	17.5	375
GN 820.4-230-VL	230	1100	71.5	44	12	6	8.2	M 8	6.6	75.5	51	18	30	27	283	196	152.5	68	26	6.5	9	158.5	20	545
GN 820.4-130-VLC	130	600	67.5	36	10	5	6.3	M 6	5.6	64.5	44	16	25.5	27.5	250	171	133	55	26	5.8	8.8	141	17.5	391
GN 820.4-230-VLC	230	1100	71.5	44	12	6	8.2	M 8	6.6	75.5	51	18	30	27	283	196	152.5	68	26	6.5	9	158.5	20	579